



Ka'Umeke Kā'eo

Hawaiian Immersion Public Charter School

IN KEAUKAHA

KA LAMA

O Ka Lou Iua O Ka Moku

Kepakemapa 2020 Vol.2

20

Mālama SURVEYS

First day packets

If you have not done so yet, please go to <https://bit.ly.co/3cr0> to fill out your 'ohana first day packets. The link for these forms can also be found on our website at www.kaumeke.org. If you would like a hard copy to fill out please call our ke'ena at 933-3482 to request one and you may come down to Hale Lamalama to pick it up. Please fill it out ASAP and/or come on down to pick it up after you have called our ke'ena.

Distance Learning Survey

Please take the time to fill out our distance learning survey online. Here is the link: <https://ggle.io/3RWc>, it is also on our website at www.kaumeke.org. Your input is invaluable to the success of our program.

EMAIL US

Kokua@kaumeke.net

Email us with questions, needs, or concerns!

Mea'ai

THE FOOD BASKET

Supplies are limited and will be distributed on a first come first serve basis. They ask everyone to be considerate of the local traffic around the drops and to arrive a half an hour prior to the start time. Stay in your vehicle these are drive thru only.

Honoka'a Sports Complex and Skate Park

Friday Sept. 25, 10am

Volcano Cooper Center

Wednesday Sept. 30, 10am

Waimea District Park

Tuesday Oct. 6, 10am

Kea'au High School

Wednesday Oct. 7, 10am

Kohala Kamehameha Park

Thursday, Oct. 8, 10am

P-EBT is BACK!

\$286 per keiki will be distributed for August and September. This is for both months together. Benefits will be distributed by September 29th. Both our K-12 program and Pre-K program are eligible, however, benefits may come on multiple cards if you have keiki in both programs.

UPDATE: FREE

BREAKFAST AND LUNCH

Will be starting soon. This previous start date was Sept. 21st and it has been delayed. We will follow up when a new date is set. the following DOE schools will be providing free grab and go meals to students:

EB DeSilva Elem
Keaukaha Elem
Keaau Elem, Middle & High
Hilo Inter & High
Hilo Union
Kalaniana'ole Elem & Inter
Chiefess Kapi'olani Elem
Kaumana Elem
Mountain View Elem
Pāhoa Elem, Inter, & High
Waiākea Elem, Inter, & High
Waiākeawaena Elem
Keonepoko
Ha'aheo Elem
Na'alehu Elem & Inter
Ka'ū High
Pahala Elem

Breakfast served 7:30-8:00a.m.

Lunch served from 11:30a.m.-12:00p.m.

Papakū Makawalu

MELEMELE

He hua'ōlelo 'ē a'e paha kou no ka waiho'olu'u. "Melemele." He momi paha kou e ka'ana ai me ka 'ohana i hiki iā kākou ke ho'onui 'ike. E koho 'ia ana kekahi o nā hua'ōlelo no ka hō'ike'ike 'ana ma www.kaumeke.org a e palapala 'ia ana nā hua'ōlelo a pau a 'oukou e ka'ana ai. E palapala i ka hua'ōlelo a me ka mana'o e like ho'i me ka la'ana. E leka uila i ka hua'ōlelo iā pomai@kaumeke.net ma mua o ka lā 2 o 'Okakopa.

Do you know another word for "Yellow." Do you have "pearls of wisdom" that you can share with our families so that we can broaden our knowledge? Some of the words will be chosen and presented on www.kaumeke.org. All words will also be documented and shared. Please email your word and the meaning following the example shown on the following pages. Email your word to pomai@kaumeke.net before October 2nd.

Please see the next pages for last weeks 'Ula'ula entry and more information.

Mana'o o Kēia Pule

I MAIKA'I KE KALO I KA'ŌHĀ

*Ke'alohe Holomalua
Papa 8, Kumu Emilia*

'O kekahi mana'o no kēia 'ōlelo no'eau 'o ia ka maika'i a maika'i 'ole o kekahi mea. E like ho'i me ke kalo. Inā ke mae nei nā lā, 'a'ole i kanu kūpono ai ke kalo, a ke puka mai nei nā a'a mai ka lepo me kekahi 'ano palekana e make ana. 'A'ole e maika'i ka 'ohā, e palahu koke 'ana a 'a'ole maika'i no ka 'ai 'ana. No laila, i nā ua malama kūpono 'oe i ke kino a ho'oma'ema'e pono 'ia me ka maika'i e ola pono ana ke kino. Like me ka ha'awina, Inā kākau 'oe me ka nani a pololei e hiki ana ka 'ohā (ke kumu) ke moākaka aku ai i kau 'ōlelo. Me ka maopopo 'ana i ke 'ano o ka i'o ma kau 'ōlelo.

Ola Kino

FREE COVID TESTING

Wednesday Sept.23

Civic Auditorium 9am-1pm

Keahou Shopping Center 9am-12pm

Thursday Sept 24

Kahuku Park, Ocean View 10am-2pm

Friday, September 25

Civic Auditorium 9am-12pm

Keahou Shopping Center 9am-12pm

Kōkua

KAHIAU COMMUNITY ASSISTANCE PROGRAM

*Council for Native Hawaiian
Advancement*

This emergency assistance program will give up to \$1,500 for your overdue:

Mortgage Payment
Rent Deposit
Rent Payment
Utility Service

Eligibility (Need proof of):

18 yrs or older
Native Hawaiian
Resident of the state of Hawai'i
Proof of Hardship

Past due or "Soon to be" past due bill
Go to hawaiiancouncil.org/kahiau for more information on how to apply

'ŌLELO HELP & CLASSES

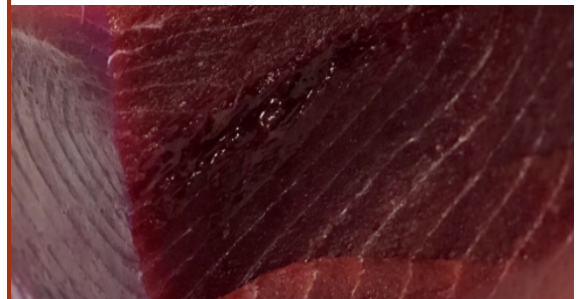
Kumu Kaliko Trapp is available to help with all your 'ōlelo Hawai'i questions and ha'awina for 'ohana and haumāna. Kumu Trapp will be offering office hours on Sundays from 1-3pm and Thursdays 4-5pm. The Zoom ID for his office hours is 895 053 1868 and no password is needed. Beginning in October interested 'ohana will be able to sign up for access to 'ōlelo classes and other subscription based content that will be free. Visit www.oleloonline.com to learn more.

HE UI, HE NĪNAU. E UI AKU ANA AU IĀ ‘OE

‘Ula‘ula

Mahalo no ke
komo ‘ana i ka
ho‘okūkū.

‘Alaea- Flesh like redness, especially the dark red meat close to the spine of some fish, as of the aku. Red, as the flesh of the aku and ahi. (Kumu Ili)



‘Ehu- Reddish tinge in hair, of Polynesians and not of Caucasians; one with ‘ehu hair; reddish-brown complexion said to be characteristic of some ‘ehu people; ruddy. (Kumu Naoli)



‘Ena- Red-hot, glowing, raging, as fire; epithet of an oven when red hot. Applied also to anger. To burn, as fire; ua ‘*ena* loa ka ‘ula o ka ma‘i, the sick person is red with heat. (Kumu Stephnie)



HE UI, HE NĪNAU. E UI AKU ANA AU IĀ ‘OE

LĀ PALENA PAU 2 | ‘Okakopa | 2020

LEKA UILA IĀ

pomai@kaumeke.net

La‘ana:

Melemele

Pomai Brandt (pomai@kaumeke.net)

Melemele

Hālena- Yellowish, pale yellow

Na‘u,
na (kou [inoā](#) mua & [inoā](#) hope)

Georgia T B I U A [list icons]
Send A [attachment icons]

He hua‘ōlelo ‘ē a‘e paha kou no ka waiho‘olu‘u “[Melemele](#).” He momi paha kou e ka‘ana ai me ka ‘ohana i hiki iā kākou ke ho‘onui ‘ike. E koho ‘ia ana kekahi o nā hua‘ōlelo no ka hō‘ike‘ike ‘ana ma kaumeke.org a e palapala ‘ia ana nā hua‘ōlelo a pau a ‘oukou e ka‘ana ai. E palapala i ka hua‘ōlelo a me ka mana‘o e like ho‘i me ka la‘ana. E leka uila i ka hua‘ōlelo iā pomai@kaumeke.net ma mua o ka lā 2 ‘Okakopa.

Do you know another word for “[Yellow](#).” Do you have “pearls of wisdom” that you can share with our families so that we can broaden our knowledge? Some of the words will be chosen and presented on kaumeke.org. All words will also be documented and shared. Please email your word and the meaning following the example. Email your word to pomai@kaumeke.net before October 2nd.